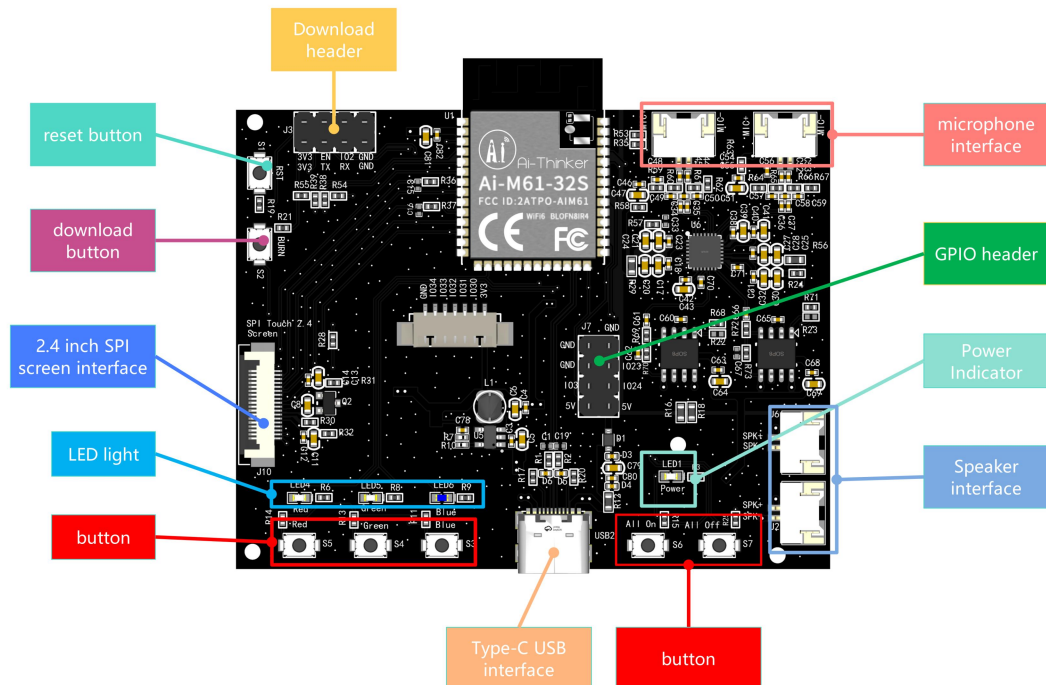


AiPi-SCP-2.4 Wireless Central Controller

Firmware User Guide

AiPi-SCP-2.4 uses Ai-Thinker Ai-M61-32S module as the control core, uses Type-C interface for power supply, connects to 2.4-inch RGB LCD display through SPI interface, and connects external audio circuit for voice broadcast and button group physical control.

The Ai-M61-32S module equipped has rich peripheral interfaces, including DVP, MJPEG, Dispaly, AudioCodec, USB2.0, SDU, Ethernet (EMAC), SD/MMC (SDH), SPI, UART, I2C, I2S, PWM, GPDAC, GPADC, ACOMP, GPIO, etc.



Flashing Firmware

1. serial port wiring

TTL tool	AiPi-SCP-2.4
3.3V	3.3V
TXD	RX

RXD	TX
GND	GND

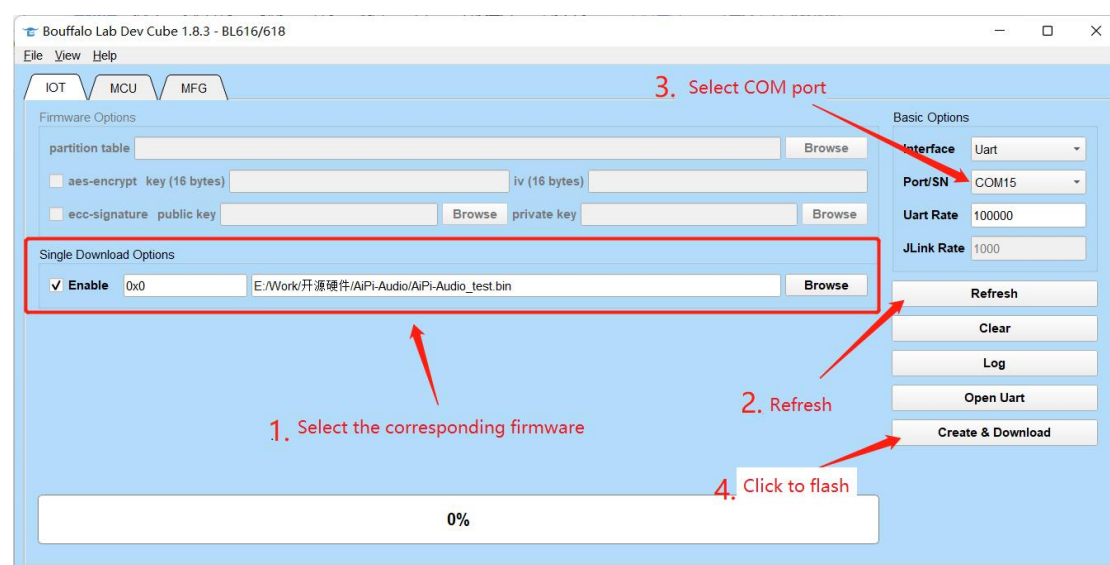
2. Flashing

Download the burning tool: [Click to download](#)

Firmware: [Click to download](#)

After the burning tool starts burning, first press and hold the "download button" and then press the "reset button" and then release it to enter the burning mode.

Open BLDevCube.exe, choose BL616/618, click Finish.



Note: After the firmware burning is completed, you need to press the reset button once before the program can run.

Steps:

AiPi-SCP-2.4 is equipped with two speakers and microphones, as well as a 2.4-inch touch LCD display.



Features of the firmware:

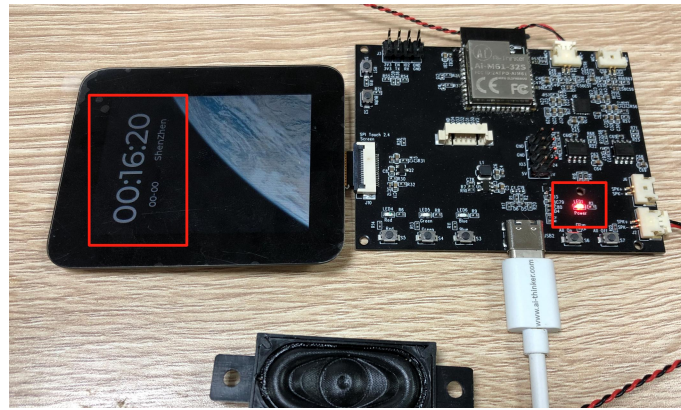
1. The screen drives the display, and at the same time, you can use the screen to input the connection WiFi name and password to achieve time synchronization
2. The function of the firmware is to play the sound input by the microphone through the speaker in real time.
3. Five buttons realize light control, S5, S4, and S3 control the red, green, and blue lights respectively, and S6, S7 control the three lights on and off at the same time.

Note:

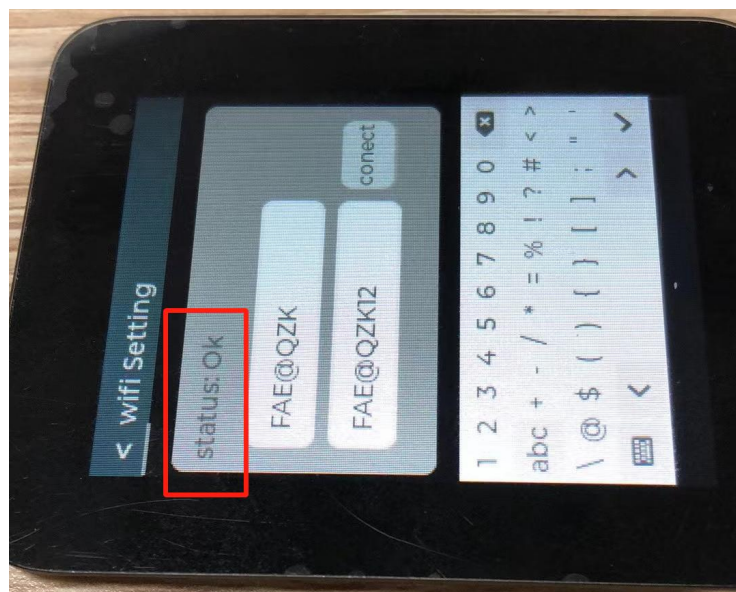
1. There is a one-to-one correspondence between the horn mouth and the microphone, MIC1 corresponds to SPK1, and MIC2 corresponds to SPK2.
2. The button light control must be connected to the screen before it can be used.

Functional display:

After power on, the power LED light will be on, and the time will start counting from 00:00.



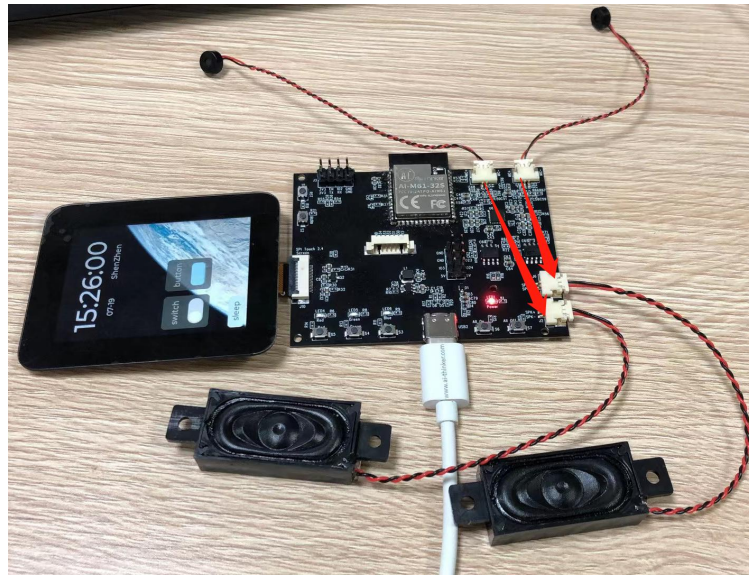
Slide down the screen and click NetWork, enter the correct WiFi name and password, and click Connect. Correct will display OK.



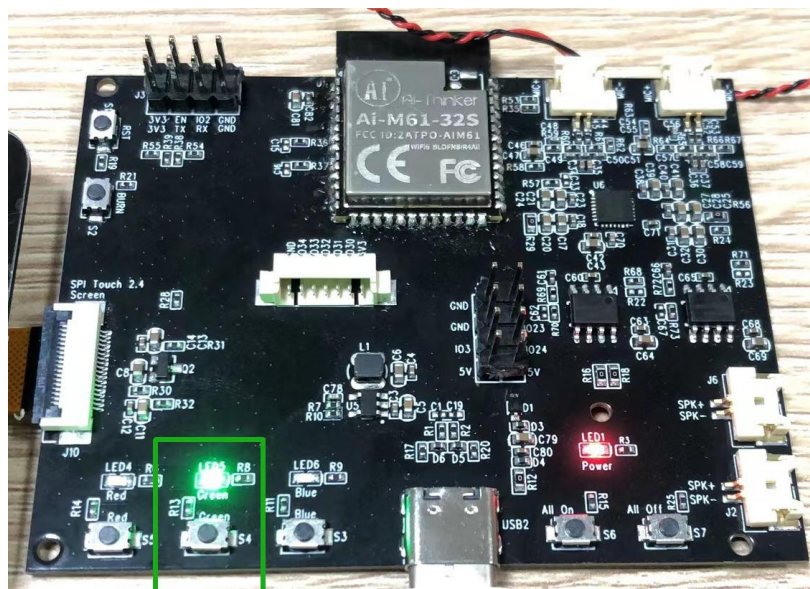
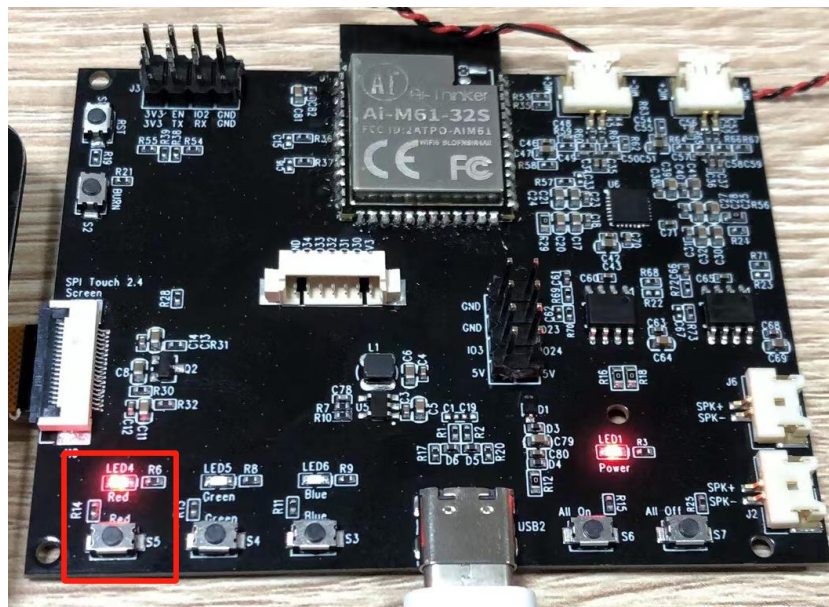
After successfully connecting to the network, the time will be synchronized with Beijing time, and the date will be displayed normally.

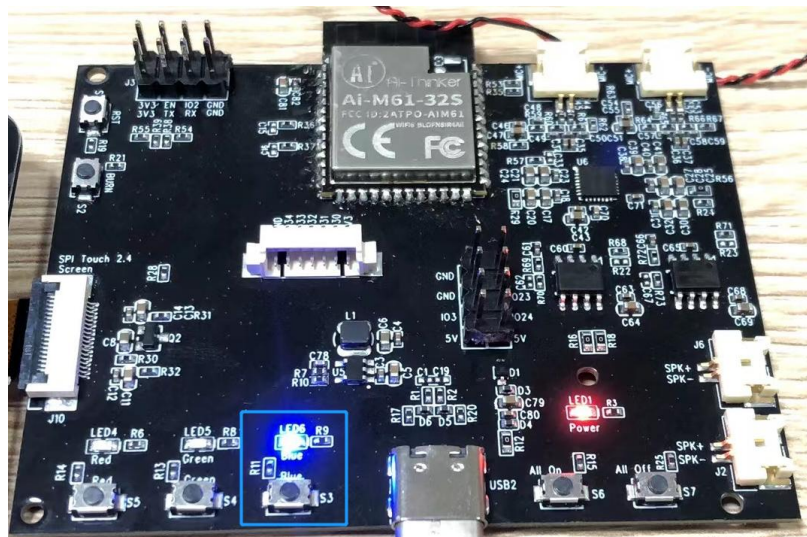


The function of the speaker is difficult to show in the document, only the wiring diagram is enough.



Light control display, the button independently controls the light to turn on and off.





Three lights on at the same time

