



LoRa-Kit Specification

Version V1.0.0

Copyright ©2024

Document resume

Version	Date	Develop/revise content	Edition	Approve
V1.0.0	2024.04.10	First Edition	ShiDao Teng	Hong Xu

Content

1. Product overview	4
1.1. Characteristic	4
2. Main parameter	5
2.1. Electrostatic requirements	5
2.2. Electrical characteristics	5
2.3. Development board digital port features	6
2.4. RF Parameter table	6
3. Appearance size	7
4. Pin definition	11
4.1. LoRa-Kit Pin definition	11
4.2. Adapter pin definition	14
5. Schematic	16
6. Storage conditions	18
7. Product packaging information	18
8. Contact us	18
Disclaimer and copyright notice	19
Notice	19
Important statement	20

1. Product overview

LoRa-Kit is a development board designed by Ai-Thinker Co.,Ltd for LoRa module, which is equipped with STM32F103C8T6 chip and TB-05 module, The LoRa adapter pins are reserved for adapters such as Ra-01 and Ra-03, facilitating the development and testing of LoRa communication and low-power performance for the full series LoRa modules such as Ra-01/Ra-01S/Ra-01SC/Ra-03SCH. TB-05 module installed on LoRa-Kit can cooperate with the small program developed by our company to configure the radio frequency parameters of LoRa module and realize the point-to-point pull distance test. In addition, the jumper pin reserved on the board can be used as a secondary development burning and low power evaluation test interface.

TB-05 is a BLE5.0 low power Tmall Genie Mesh Bluetooth module based on TLSR8250 chip design; The module supports Bluetooth module directly controlled by Tmall Genie and has Bluetooth mesh networking function; Devices communicate with each other through a peer-to-peer star network and Bluetooth broadcast to ensure timely response in the case of multiple devices. It is mainly used in intelligent lamp control, which can meet the requirements of low power consumption, low delay and short distance wireless data communication.

Applications: For LoRa communication and low power performance development and testing.

1.1. Characteristic

- DIP-30 Package
- Support Bluetooth Set LoRa node parameters
- Support band module work:

The low-band range is 410MHz to 525MHz, and supports modules such as Ra-01, Ra-02, Ra-01S, and Ra-01SC

High frequency range: 803 MHz to 930MHz, and supports modules such as Ra-01H, Ra-01SH, Ra-01SCH, and Ra-03SCH

- Development board operating voltage: 5V
- Theoretical maximum transmitted power:
The maximum transmitting power of modules such as Ra-01/Ra-02/Ra-01H is 20dBm;
The maximum transmit power of modules such as Ra-01S/Ra-01SC/Ra-01SH/Ra-01SCH/
Ra-03SCH is 22dBm
- Supports point-to-point transparent data transmission
- Supports conversion boards such as Ra-01 and Ra-03
- Supports wireless wake up
- LoRa module supports FSK, GFSK, LoRa™ modulation

2. Main parameter

Table 1 Main parameter description

Model	LoRa-Kit
Package	DIP-30
Size	40.00*50.00(± 0.2 mm)
Antenna	Semicircle orifice,IPEX
Frequency range	LoRa low frequency module: 410~525MHz; LoRa high frequency module:803~930MHz
Operation temperature	-20°C~ 70°C
Storage environment	-40°C~ 125°C, < 90%RH
Power supply	Power supply voltage 5V (Type-C port), power supply current ≥ 500 mA
Support interface	Type-C
Series Rate	Default 115200 bps

2.1. Electrostatic requirements

LoRa-Kit is electrostatic sensitive equipment that requires special precautions during handling.



Figure 1 ESD Anti-static diagram

2.2. Electrical characteristics

Table 2 Electrical characteristics

Parameter	Min.	Typical value	Max	Unit
Operating temperature	-20	-	+70	°C
Storage temperature	-40	-	+125	°C
Power supply	4.75	5	5.25	V

2.3. Development board digital port features

Table 3 Development board digital port

Description		Typical Value			Unit
Max. Operating Frequency		72			MHz
Port	Name	Min.	Typical Value	Max.	Unit
MCU Power Supply	VDD	-	3.3	-	V
IO electrical level	VIO	-	3.3	-	V
Input logic level is low	VIL	GND	-	0.35VDD	V
Input logic level is high	VIH	0.65VDD	-	VDD+0.5	V
Input logic level is low	VOL	VSS	-	0.35VDD	V
Input logic level is high	VOH	0.65VDD	-	VDD	V

2.4. RF Parameter table

Table 4 RF parameters

Model	Description		Theoretical value			Unit
	Mode	Frequency band	Min.	Typical Value	Max	
Ra-01	Output power	410~525MHz	-	-	20	dBm
Ra-02	Output power	410~525MHz	-	-	20	dBm
Ra-01H	Output power	803~930MHz	-	-	20	dBm
Ra-01S	Output power	410~525MHz	-	-	22	dBm
Ra-01SH	Output power	803~930MHz	-	-	22	dBm
Ra-01SC	Output power	410~525MHz	-	-	22	dBm
Ra-01SCH	Output power	803~930MHz	-	-	22	dBm
Ra-03SCH	Output power	803~930MHz	-	-	22	dBm

3. Appearance size

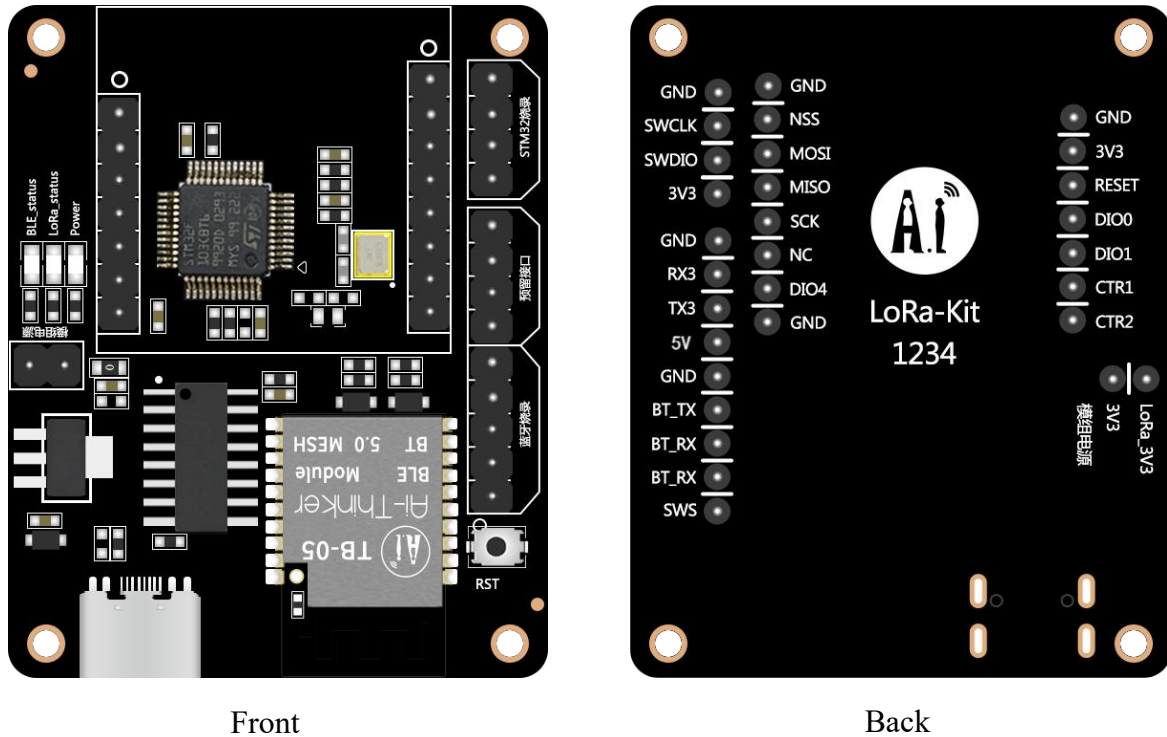


Figure 2 Appearance of LoRa-Kit (The rendering is for reference only)

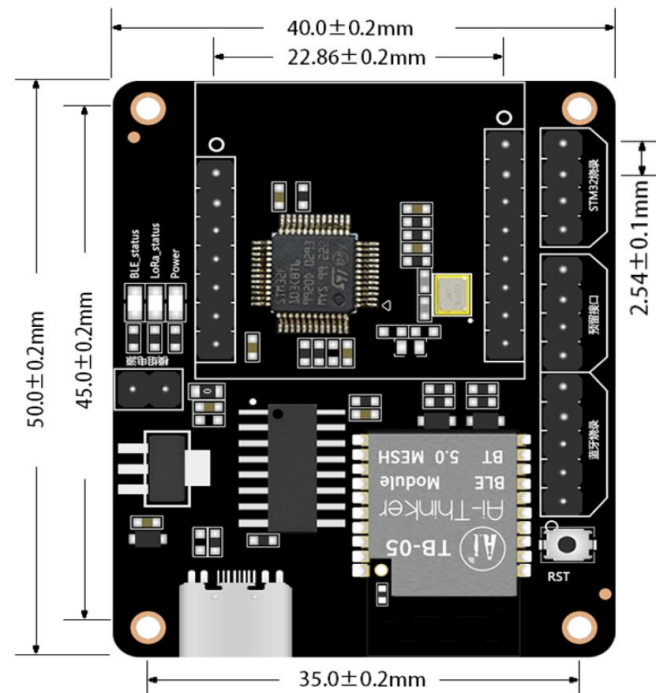


Figure 3 Size diagram

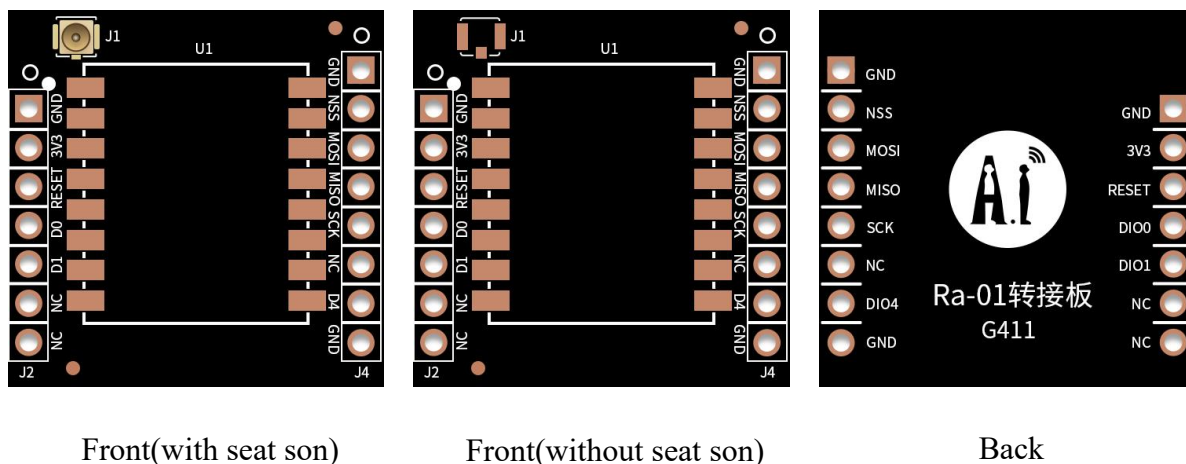


Figure 4 Appearance of the Ra-01 (The rendering is for reference only.)

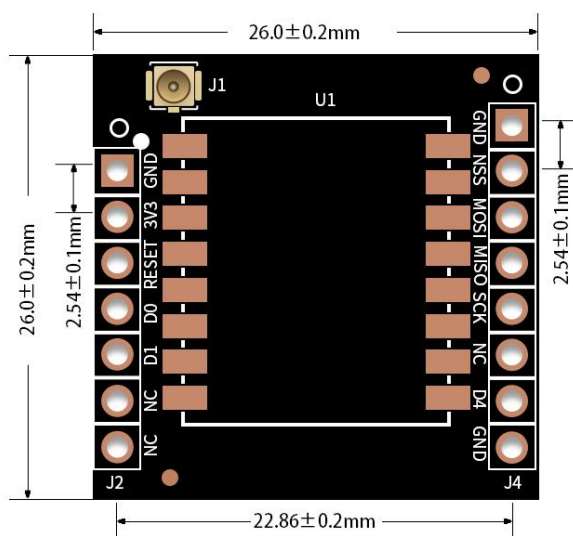


Figure 5 Dimensions of the Ra-01

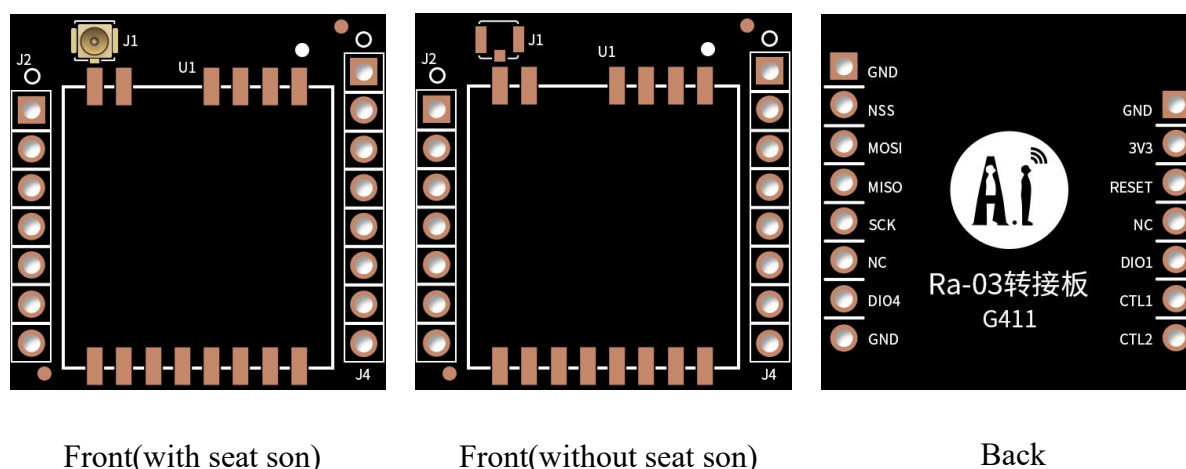


Figure 6 Appearance of the Ra-03 converter board

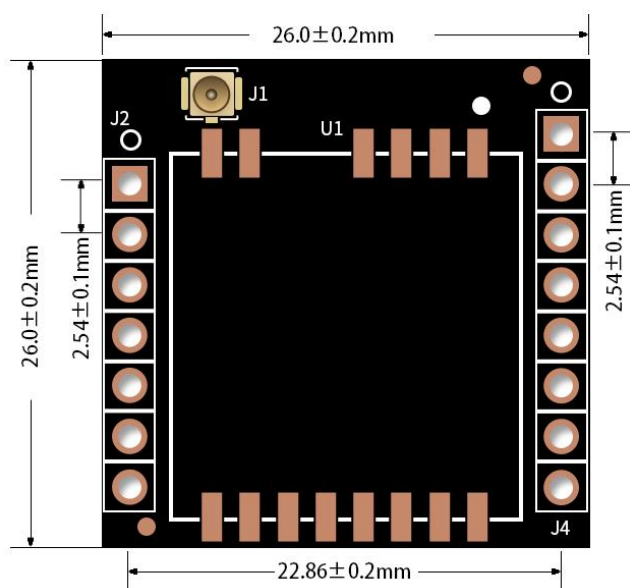


Figure 7 Dimensions of the Ra-03 adapter board

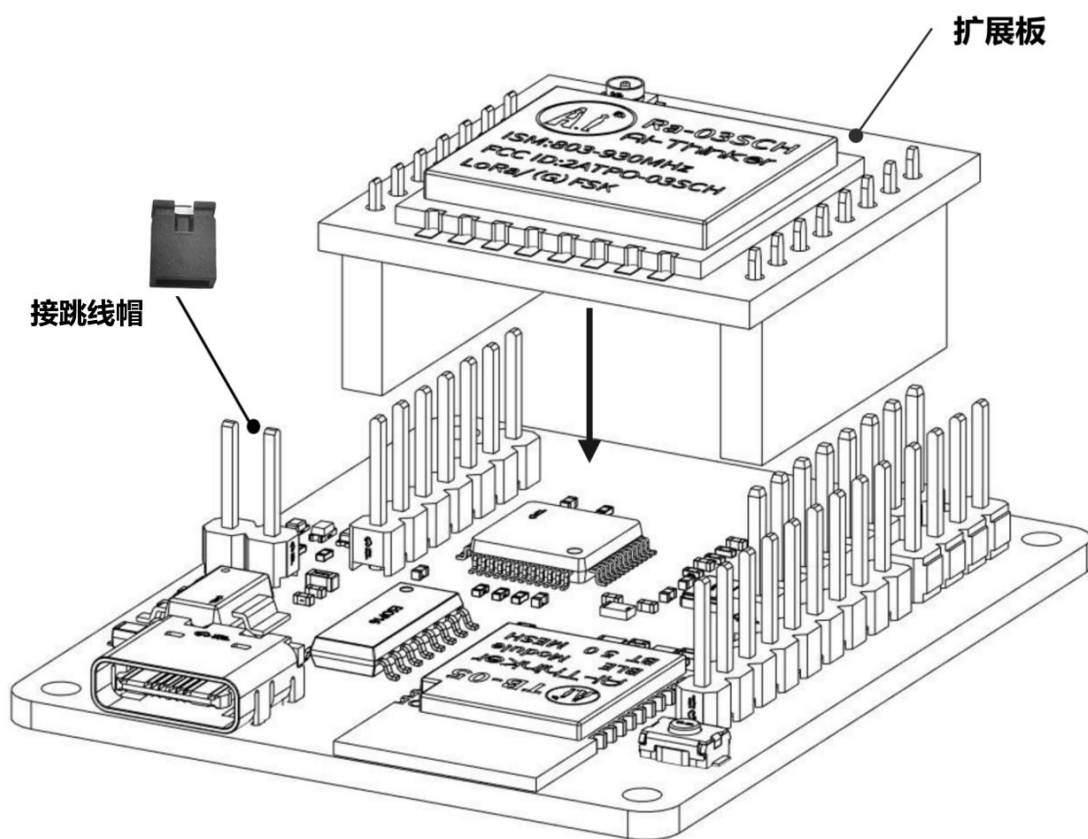


Figure 8 Connection between the conversion board and development board

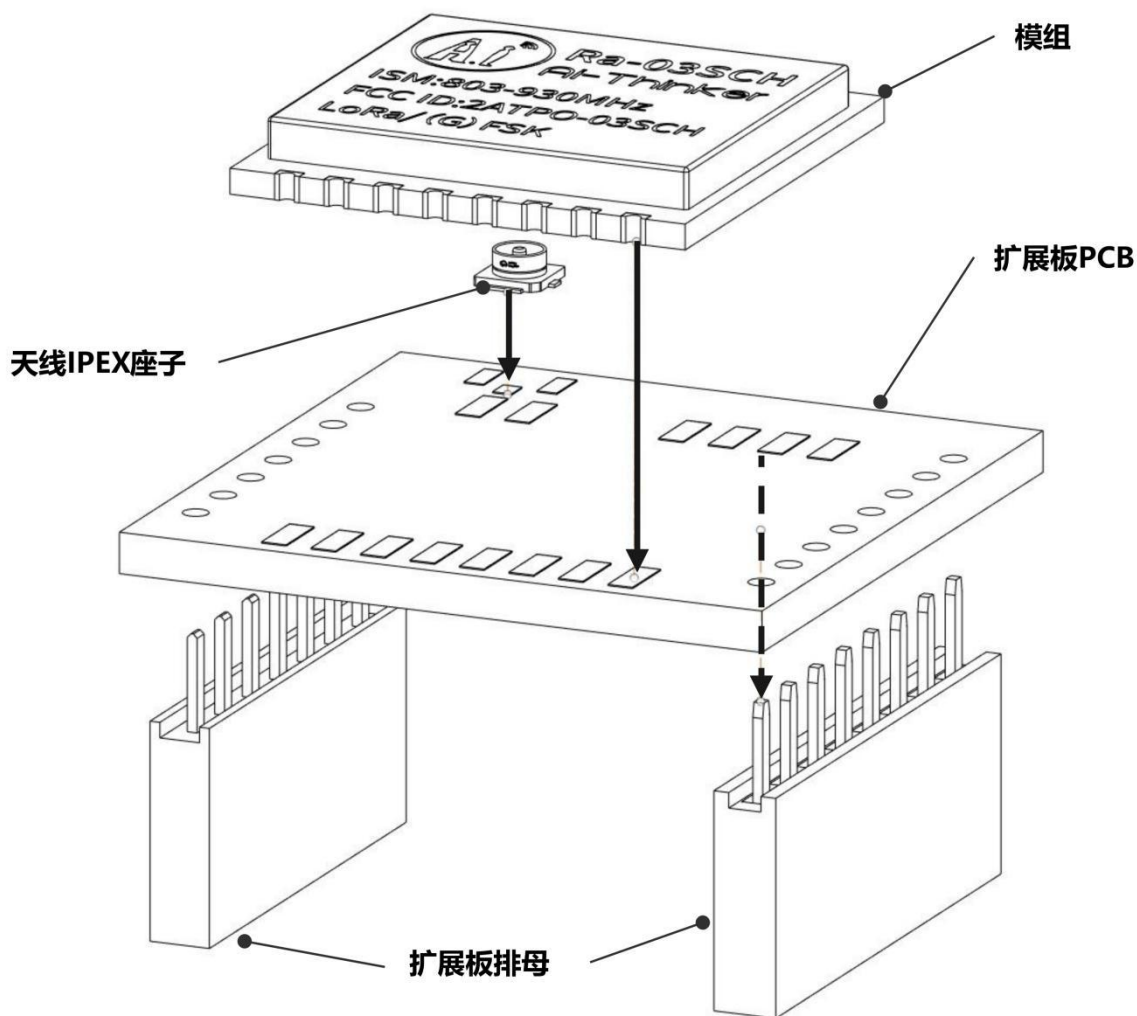


Figure 9 Schematic diagram of the transfer plate

Table 5 Correspondence table between adapter board and LoRa module

Adapter plate type	LoRa Module type
Ra-01 adapter board	Ra-01
	Ra-02
	Ra-01H
	Ra-01S
	Ra-01SH
	Ra-01SC
	Ra-01SCH
Ra-03 adapter board	Ra-03SCH

4. Pin definition

4.1. LoRa-Kit Pin definition

LoRa-Kit connects a total of 30 interfaces, such as the pin diagram, and the pin function definition table is the interface definition.



Figure 10 Schematic diagram of pin

Table 6 LoRa-Kit pin function definition table

NO.	Name	Function declaration
1	GND	Ground
2	3V3	3.3V power supply; The input current of the external power supply is recommended to be above 500mA
3	RESET	LORA_RESET: Reset pin of LoRa module
4	DIO0	LORA_DIO0: Digital IO0 software configuration for LoRa
5	DIO1	LORA_DIO1: Digital IO1 software configuration for LoRa
6	CTR1	CTR1: It is used to drive Ra-03SCH RF switches
7	CTR2	CTR2: It is used to drive Ra-03SCH RF switches
8	GND	Ground
9	DIO4	LORA_DIO4: Digital IO4 software configuration for LoRa
10	NC	NC
11	SCK	SPI_SCK: SPI clock input for the LoRa module
12	MISO	SPI_MISO: SPI clock input of LoRa module
13	MOSI	SPI_MOSI: SPI clock input of LoRa module
14	NSS	SPI_NSS: SPI clock input of LoRa module
15	GND	Ground
16	GND	Ground
17	SWCLK	SWCLK: STM32F103CBT6 Chip burning interface
18	SWDIO	SWDIO: STM32F103CBT6 Chip burning interface
19	3V3	3.3V power supply; The input current of the external power supply is recommended to be above 500mA
20	GND	Ground
21	RX3	UART3_RX: Reserved serial port
22	TX3	UART3_TX: Reserved serial port
23	5V	5V power supply; The input current of the external power supply is recommended to be above 500mA
24	GND	Ground
25	BT_TX	BLE_TX: STM32F103CBT6 and TB-05 COM port
26	BT_RX	BLE_RX: STM32F103CBT6 and TB-05 COM port
27	BT_RX	BLE_RX: TB-05 burn control pin
28	SWS	SWS: TB-05 burn control pin

29	LORA_3V3	3.3V power supply; The input current of the external power supply is recommended to be above 500mA
30	3V3	3.3V power supply; The input current of the external power supply is recommended to be above 500mA
Note: The jumper cap short-pins 29 and 30 power the Lora module.		

Table 7 LoRa adapter board corresponds to the pin of STM32F103C8T6 chip

STM32F103C8T6 Pin	LoRa adapter board
PB14	LORA_RESET
PB0	LORA_DIO0
PB1	LORA_DIO1
PA0/WKUP	LORA_DIO4
PA11	CTR1
PA12	CTR2
PA5	SPI_SCK
PA6	SPI_MISO
PA7	SPI_MOSI
PA4	SPI_NSS

Table 8 TB-05 module corresponds to the pins of the STM32F103C8T6 chip

STM32F103C8T6 Pin	TB-05 Module
PA3/UART2_RX	BLE_TX
PA2/UART2_TX	BLE_RX
PA1	TB-05_RST

4.2. Adapter pin definition

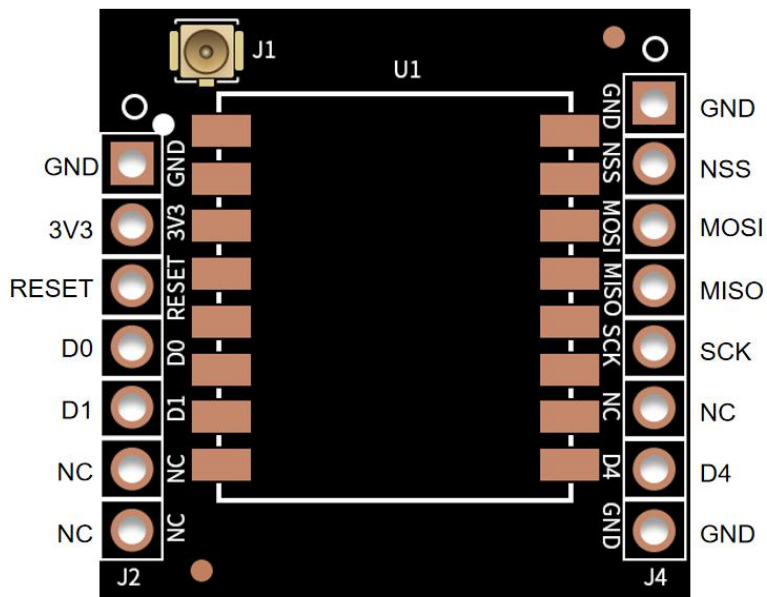


Figure 11 Connecting pins of the Ra-01 conversion board

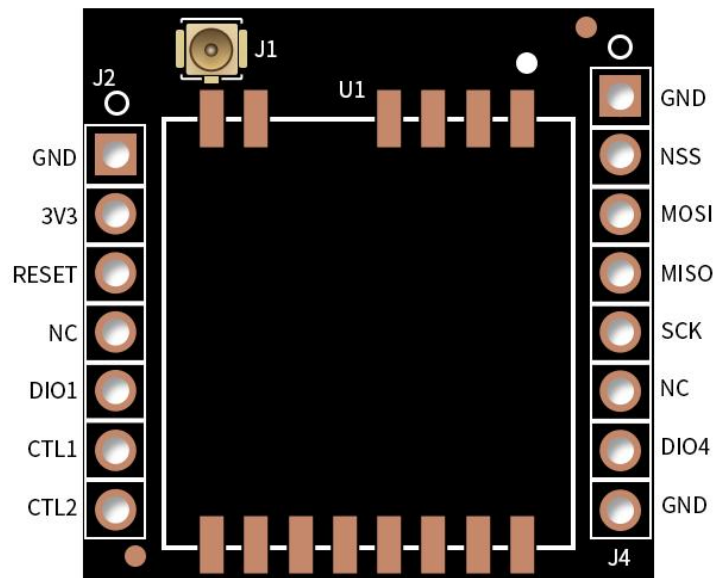


Figure 12 Connecting pins of the Ra-03 adapter plate

Table 9 Ra-01 Adapter pin definitions

No.	Name	Function description
1	GND	Ground
2	3V3	Typical value 3.3V power supply, current greater than 200mA
3	RESET	LoRa Module reset pin
4	DIO0	Digital IO0 software configuration
5	DIO1	Digital IO1 software configuration
6	NC	NC
7	NC	NC
8	GND	Ground
9	DIO4	Digital IO4 software configuration
10	NC	NC
11	SCK	SPI clock input
12	MISO	SPI data output
13	MOSI	SPI data input
14	NSS	SPI SR-IN SRAM
15	GND	Ground

Table 10 Ra-03 Adapter pin definitions

No.	Name	Function description
1,8,15	GND	Ground
2	3V3	Typical value 3.3V power supply, current greater than 200mA
3	RESET	LoRa Module reset pin
4	DIO0	NC
5	DIO1	Digital IO1 software configuration
6	NC	It is used to drive Ra-03SCH RF switches
7	NC	It is used to drive Ra-03SCH RF switches
9	DIO4	Digital IO4 software configuration
10	NC	NC
11	SCK	SPI clock input
12	MISO	SPI data output
13	MOSI	SPI data input

5. Schematic

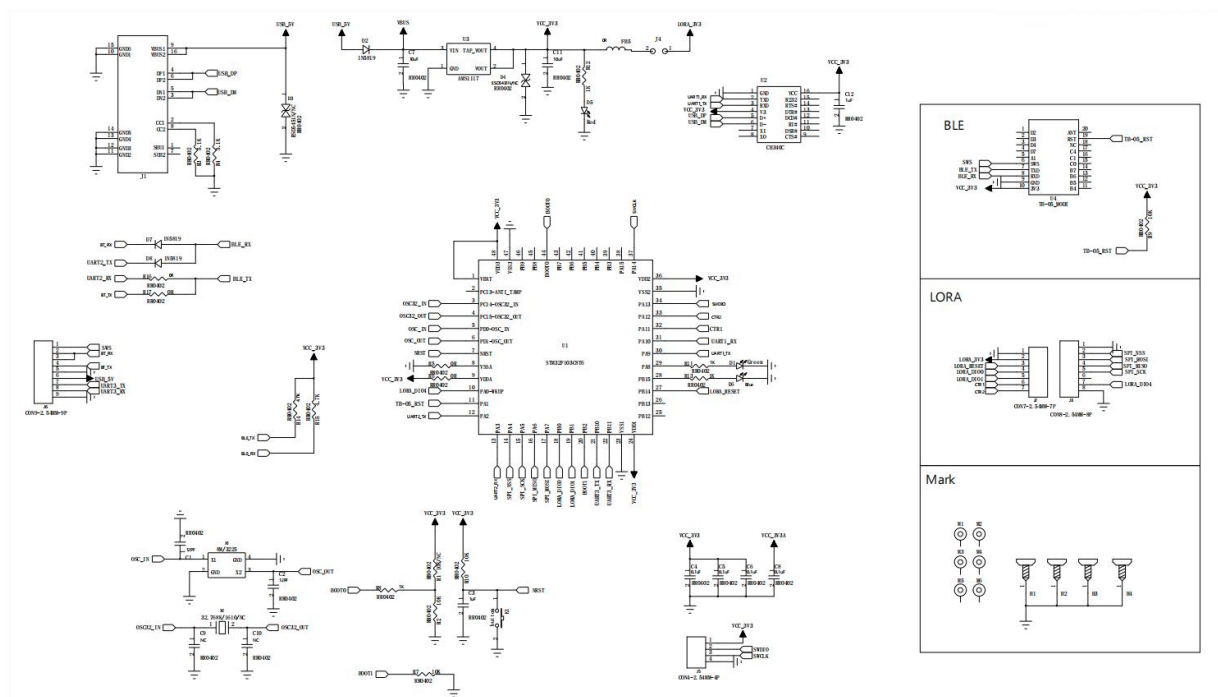


Figure 13 Schematic diagram of LoRa-Kit development board

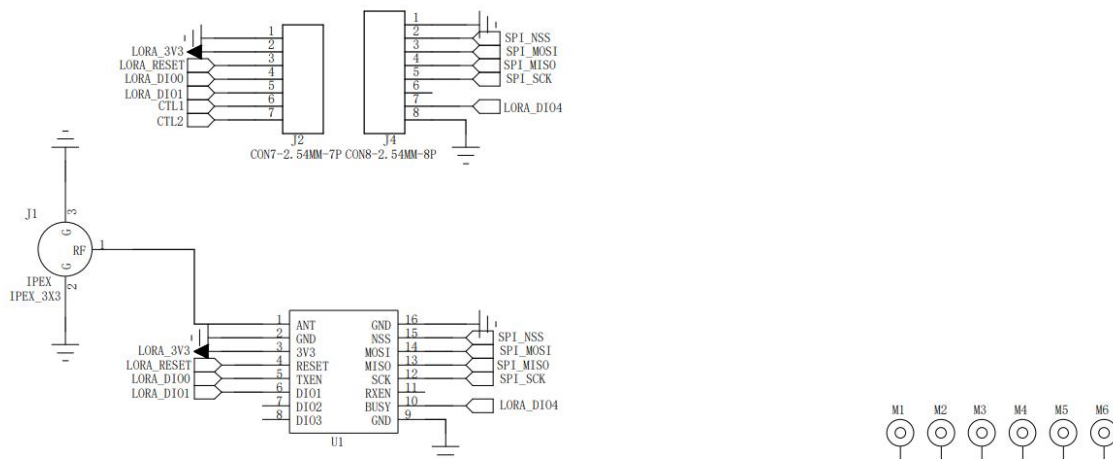


Figure 14 Schematic diagram of the Ra-01 switch board

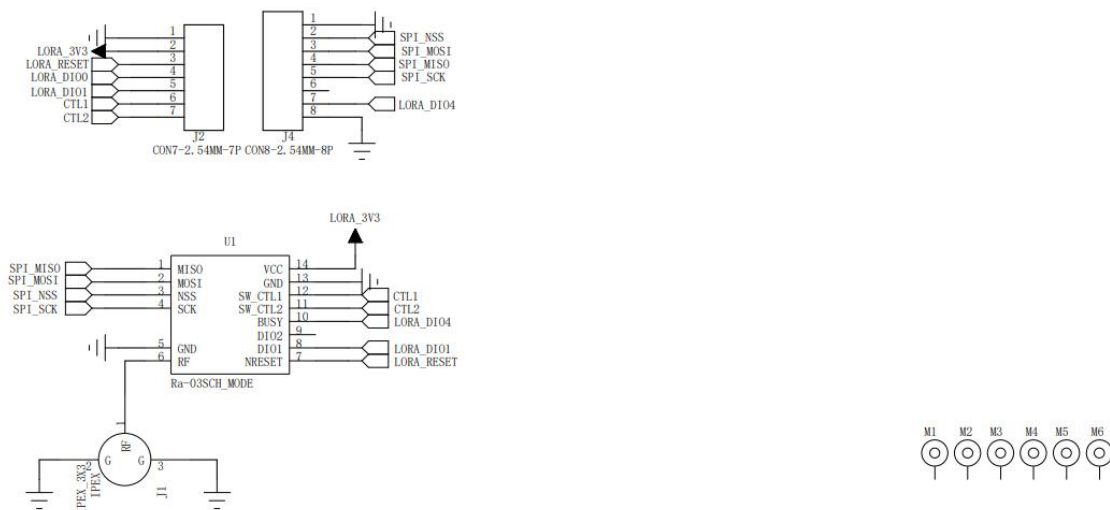


Figure 15 Schematic diagram of the Ra-03 switch board

6. Storage conditions

Products sealed in moisture-proof bags should be stored in a non-condensing atmospheric environment of $<40^{\circ}\text{C}/90\%\text{RH}$.

The module has a moisture sensitivity level MSL of level 3.

After the vacuum bag is unsealed, it must be used within 168 hours at $25\pm 5^{\circ}\text{C}/60\%\text{RH}$.

7. Product packaging information

Table 8 Packaging information

Packing list	Packing way	Quantity per pack (Electrostatic bag)
LoRa-Kit	Foam + electrostatic bag	1pcs

8. Contact us

[Ai-Thinker official website](#)

[Office forum](#)

[Develop DOCS](#)

[LinkedIn](#)

[Tmall shop](#)

[Taobao shop](#)

[Alibaba shop](#)

[Technical support email: support@aithinker.com](#)

[Domestic business cooperation: sales@aithinker.com](#)

[Overseas business cooperation: overseas@aithinker.com](#)

Company Address: Room 403-405,408-410, Block C, Huafeng Smart Innovation Port, Gushu 2nd Road, Xixiang, Baoan District, Shenzhen.

Tel: +86-0755-29162996



Ai-Thinker



WeChat official account

Disclaimer and copyright notice

The information in this article,including the URL address for reference,is subject to change without notice.

The document is provided"as is"without any guarantee responsibility,including any guarantee for merchantability,suitability for a specific purpose,or non-infringement,and any guarantee mentioned elsewhere in any proposal,specification or sample.This document does not bear any responsibility,including the responsibility for infringement of any patent rights arising from the use of the information in this document.This document does not grant any license for the use of intellectual property rights in estoppel or other ways,whether express or implied.

The test data obtained in the article are all obtained from Ai-Thinker's laboratory tests,and the actual results may vary slightly.

All brand names,trademarks and registered trademarks mentioned in this article are the property of their respective owners,and it is hereby declared.

The final interpretation right belongs to Shenzhen Ai-Thinker Technology Co.,Ltd.

Notice

Due to product version upgrades or other reasons,the contents of this manual may be changed.

Shenzhen Ai-Thinker Technology Co.,Ltd.reserves the right to modify the contents of this manual without any notice or prompt.

This manual is only used as a guide.Shenzhen Ai-Thinker Technology Co.,Ltd. makes every effort to provide accurate information in this manual.However, Shenzhen Ai-Thinker Technology Co.,Ltd. does not guarantee that the contents of the manual are completely free of errors.All statements and information in this manual And the suggestion does not constitute any express or implied guarantee.

Important statement

Ai-Thinker can provide technical and reliability data (including datasheets), design resources (including reference designs), applications or other design suggestions, network tools, safety information and other resources (hereinafter referred to as "these resources") as is, without guarantee of defects and without any express or implied warranty, including but not limited to the express or implied warranty of adaptability, suitability for a specific purpose or non-infringement of any third party's intellectual property rights. In particular, it declares that it will not be responsible for any inevitable or accidental losses, including but not limited to those arising from this application or the use of any products and circuits of our company.

Ai-Thinker reserves the right to release information (including but not limited to indicators and product descriptions) and any product changes of our company without prior notice. This document automatically replaces and replaces all information provided by the same document number in the previous version.

These resources can be used by skilled developers who use Ai-Thinker products to design. You will be solely responsible for the following: (1) Select the appropriate Ai-Thinker products for your application; (2) Design, verify and run your applications and products in the whole life cycle; (3) Ensure that your application meets all relevant standards, specifications and laws, as well as any other functional security, information security, regulatory or other requirements.

Ai-Thinker authorizes you to use these resources only for developing the application of Ai-Thinker products described in this resource. Without the permission of Ai-Thinker, no unit or individual may extract or copy part or all of these resources without authorization, and may not spread them in any form. You have no right to use any other Ai-Thinker intellectual property rights or any third-party intellectual property rights. You should fully compensate any claims, damages, costs, losses and debts caused to Ai-Thinker and its representatives in the use of these resources, and Ai-Thinker is not responsible for this.

The products that Ai-Thinker can provide are subject to the sales terms of Ai-Thinker or other applicable terms attached to Ai-Thinker products. Ai-Thinker can provide these resources without expanding or otherwise changing the warranty or warranty disclaimer applicable to product release.